

## Mobile Email Configuration

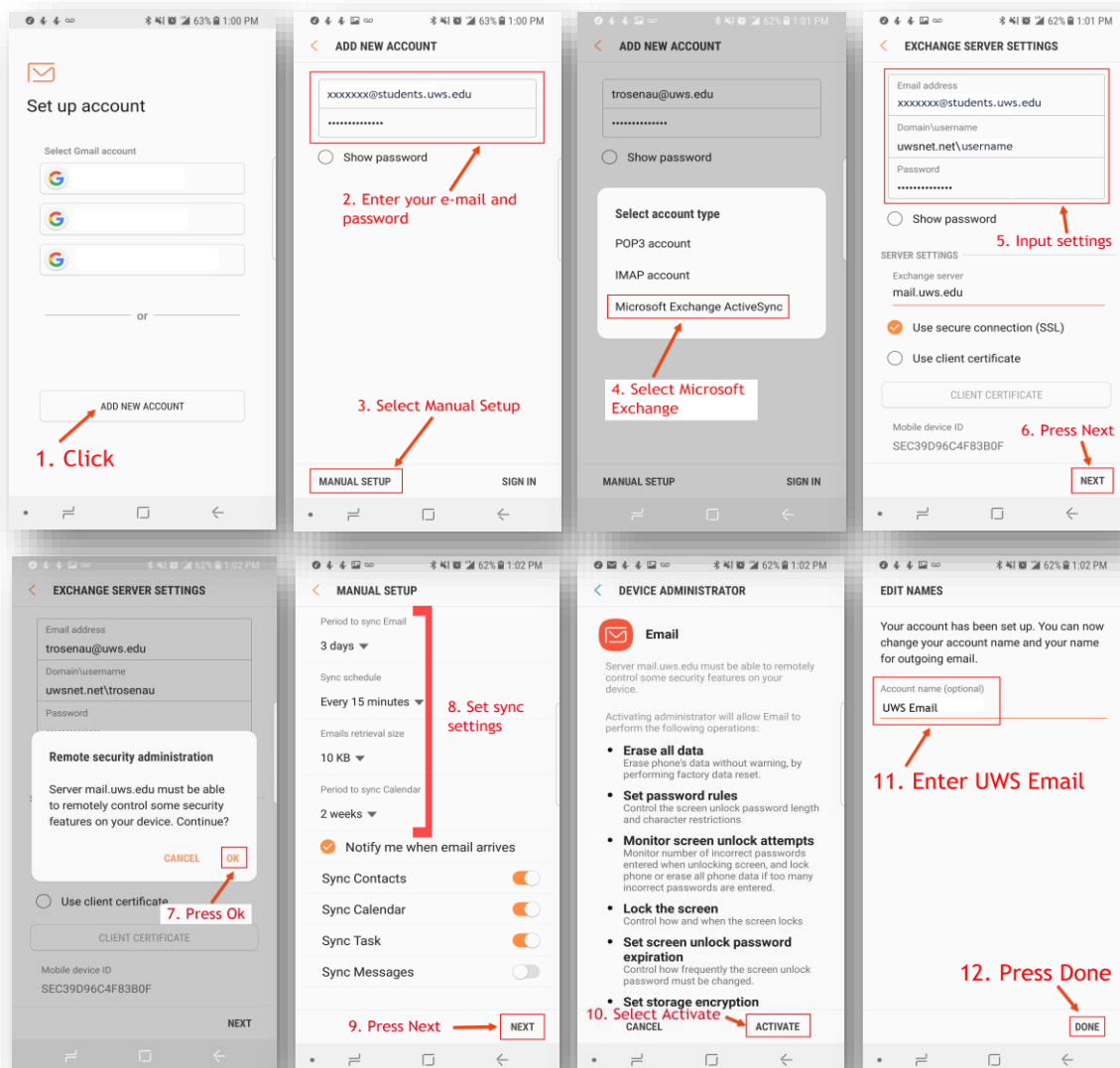
To configure your computer or mobile device you will need the following information.

Email Address .....Your UWS email address  
 Username .....Your UWS username (first part of email address: [xxxxxxx@uws.edu](mailto:xxxxxxx@uws.edu))  
 UWS Domain .....uwsnet.net  
 Password .....Your UWS password  
 Description .....Use the text, UWS Email  
 Server .....mail.uws.edu

### Configure Android Device

*(these screenshots are from a Samsung Galaxy S8 – Some settings and options may slightly differ)*

1. Open your Email App
2. Follow the steps on the images below:



## Configure iOS Device

1. On your device, open the Settings app
2. Tap **Mail, Contacts, Calendars**
3. Tap **Add Account**
4. Tap **Microsoft Exchange**
5. Enter your UWS information:
  - a. Email
  - b. Password
  - c. Description
  - d. Domain
  - e. Mail Server
6. Tap **Next**
7. Select what you want to sync (Mail, Calendar, Contacts, Reminders)
8. Tap **Save**

*(Some settings and options may slightly differ)*

